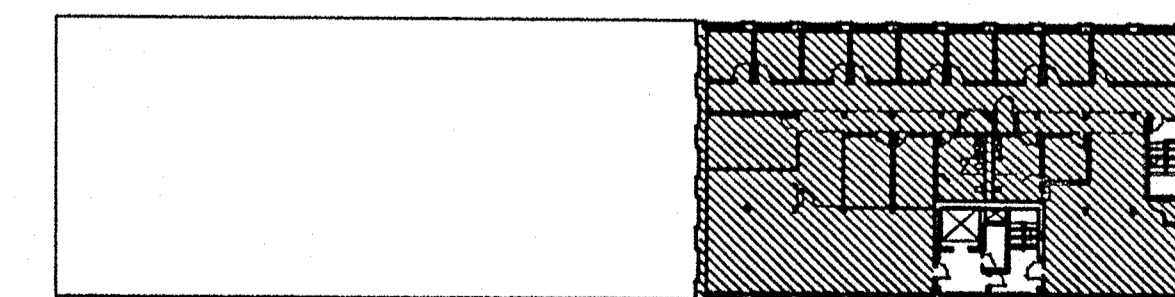


**1 FIFTH FLOOR PLAN**  
SCALE: 1/4" = 1'-0"



**2 FIFTH FLOOR KEY PLAN**  
SCALE: 1" = 40'-0"

AREA: 5,177 SQ. FT.

**Thomas  
Douglas  
Architects**

136 West Street  
Northampton, MA  
01060  
413-585-0641  
fax: 582-9882

REGISTERED ARCHITECT,  
COMMONWEALTH OF  
MASSACHUSETTS

This drawing is not intended nor shall it be used for construction purposes unless the signed professional seal of a registered architect or engineer employed by Thomas Douglas Architects is affixed hereto. The Architect or engineer shall be deemed the author of these documents and shall retain all common law, statutory and other reserved rights, including the copyright.

8-20-98

Issue:      Date:

**CANAL  
PLACE**

72 - 100 FRONT ST.  
HOLYOKE, MA

**FIFTH  
FLOOR PLAN**

SCALE AS NOTED